

luxier

Model Number:
KTS07-TB
KTS07-TC
KTS07-TO

<http://www.luxierusa.com/>

Installation Guide

Traditional Kitchen Series

Single Handle Kitchen faucet



Tools you will need:



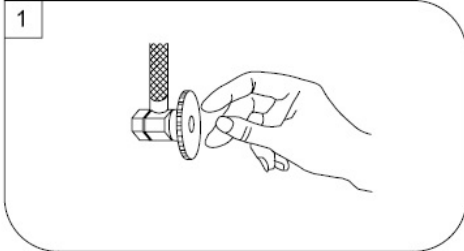
Adjustable Wrench



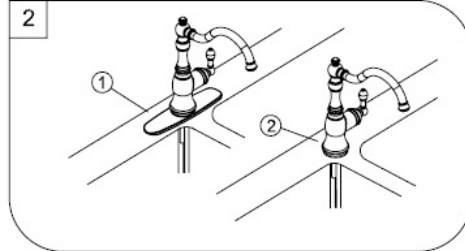
Groove joint pliers

SAFETY TIPS:

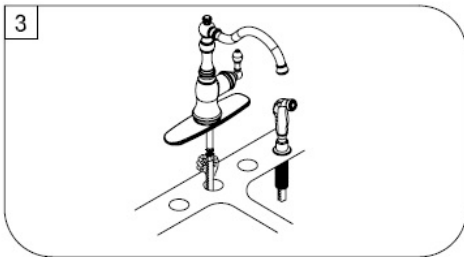
- If you use soldering for the installation of the faucet, the seats, cartridges and washers will have to be removed before using flame. Otherwise, warranty will be void on those parts.



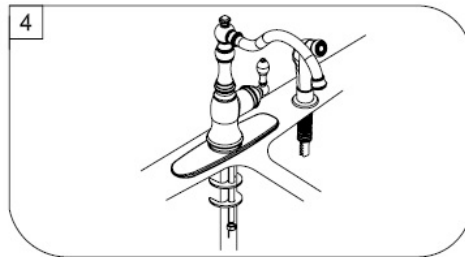
1. Shut off water supplies. Remove old faucet. Clean sink surface in preparation for new faucet.



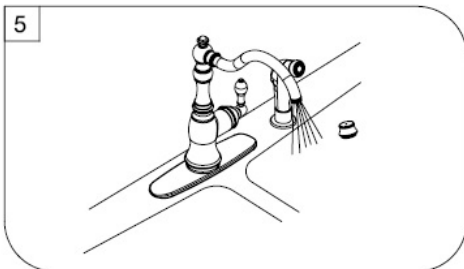
2. Place Escutcheon (1) or Flange (2) on bottom of new faucet (Optional). Position Faucet through mounting hole .



3. For models with a spray support mount spray support in far right hole in sink. Insert spray hose down through the support and up through center hole of sink. Attach spray hose to spray hose nipple.



4. Secure to sink by installing rubber washer, steel washer and nut onto mounting stud. Tighten with wrench.



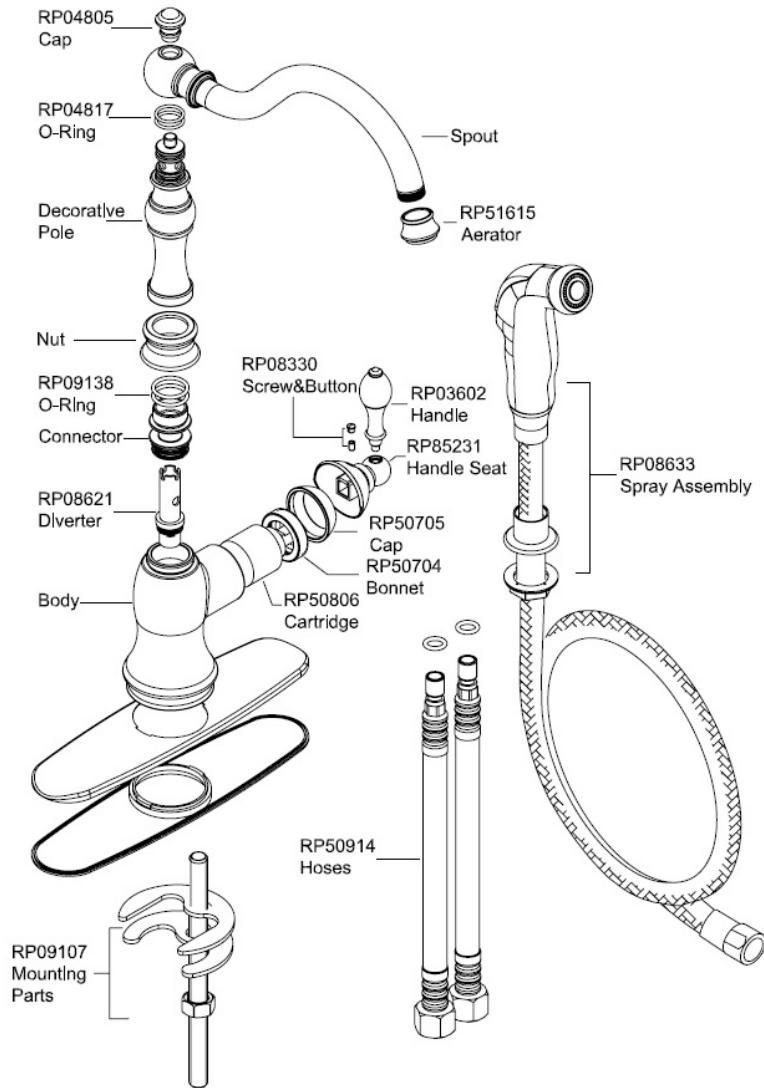
5. Important; After installation is completed, Turn on water supply and allow both hot and cold water to run for at least one minute each. While water is running, check for leaks.

Trouble-Shooting

If you've followed the instructions carefully and your faucet still does not work properly, take these corrective steps.

| <u>Problem</u> | <u>Cause</u> | <u>Action</u> |
|--|--|--|
| -Leaks underneath handle -Aerator leaks or has an inconsistent water flow pattern | -Retainer nut has come loose. O-ring is dirty or damaged -Aerator is dirty or mis-fitted. | Tighten the retainer nut, clean or replace O-ring -Unscrew aerator remove any debris, check seating of rubber seal then re-assemble aerator |

Replacement Parts



Limited Lifetime Warranty

Luxier USA warrants to the original purchaser that its products will be free from defects in workmanship and materials. This warranty does not cover any other labor or service charges associated with the removal, repair, or reinstallation of Luxier products. This express warranty does not apply to products that have been damaged as a result of misuse, abuse, negligence, accident, faulty installation or maintenance practices and/or used in any manner contrary to those recommended by the manufacturer.